

Turn your computer network into a learning environment.

Zebu



Learn on the web.

Zebu operates within the familiar environment of the Netscape™ browser window. **Zebu** enables students to learn from, build on and contribute to the wealth of information available on the World Wide Web. Teachers and students can work with peers in their class or around the globe. Because **Zebu** can be accessed on the Internet, they can work from anywhere. But projects can remain private with password security or be shared on the World Wide Web.

Collaborate, share and learn.

Zebu supports interactive learning by empowering students to create and edit online projects, discuss ideas with each other, and share valuable learning resources in a groupware environment.

<http://zebu.myschool.e>



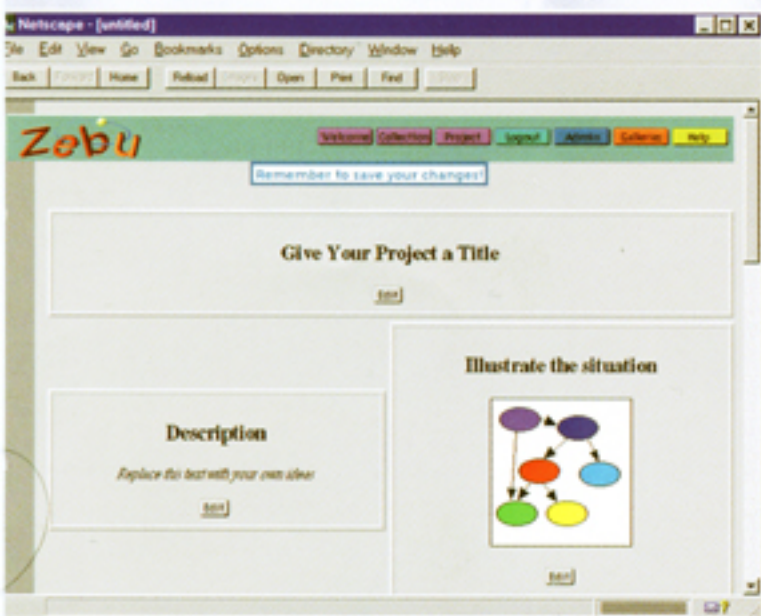
Don't just surf.

Students and teachers can use information from the web and other sources to build projects together. **Zebu** turns the web into an environment for creating knowledge, not just browsing information. Projects can be published so students can contribute their ideas to the World Wide Web.



Build projects easily.

Zebu users can easily integrate multimedia into their projects, including text, graphics, video, sound and discussions. Individuals or groups of students can dynamically edit and update their projects as they explore and create new information.



Design the learning environment.

Teachers can guide and structure students' work by providing templates for project activities, with as much or as little support as they need. Teachers can design projects from scratch or use our project ideas as a starting point. Zebu's Administration Tools make it easy to manage users and projects, and build a shared, password-protected environment. Changes take place automatically to make working together easy.

Minimum Server Requirements

Windows NT™ 4.0

HTTP Web server software
Pentium Processor - 32 MB RAM

Macintosh™

Mac OS 7.5 or higher
HTTP Web server software
PowerPC with 32 MB RAM

UNIX

Any HTTP server software
for UNIX

Client Requirements

Netscape Navigator 3.0™ or higher

Intranet Environments

Intranet networks must have
TCP/IP protocol
HTTP server must be on the network

To learn more about Zebu, contact MC² Learning Systems:



MC² Learning Systems Inc.
265, 8900 Nelson Way
Burnaby BC V5A 4W9
(tel) 604.205.2650
(fax) 604.205.2651
(toll free) 1.888.808.0388

mc2@sfu.ca
<http://www.mc2.sfu.ca>